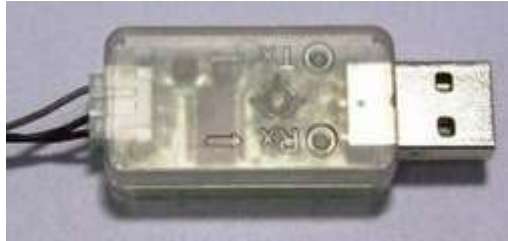


USB Downloader (LN-101)

Last updated 2010.03.08 (v1.01 Eng)

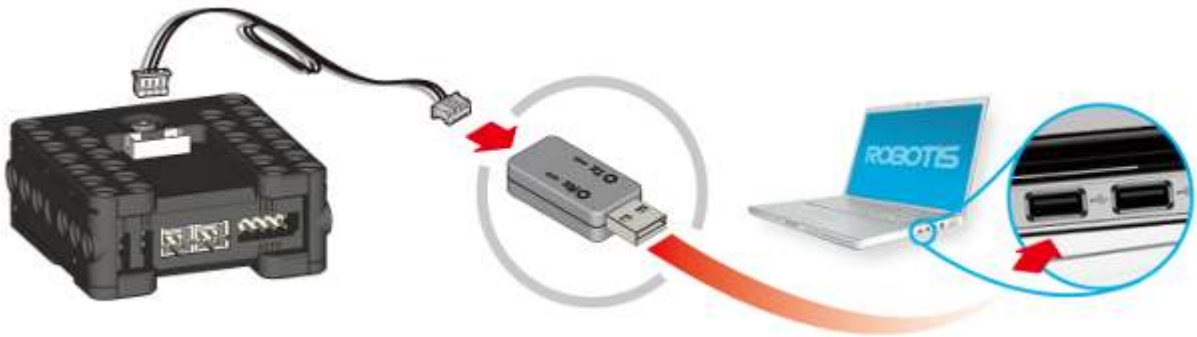
Part Photo



[LN101]

Product Usage

USB Downloader is used to connect the USB port of PC and the 4-pin port of the controller through serial communication.



[The picture showing the connection of LN-101 and CM-100]



[The picture showing the connection of LN-101 and CM-700]

[Usage of Serial Communication]

- [Download Task code written in PC using the controller](#)
- [Print out the result of task code execution on the screen of PC](#)
- [Virtual robot control of RoboPlus](#)

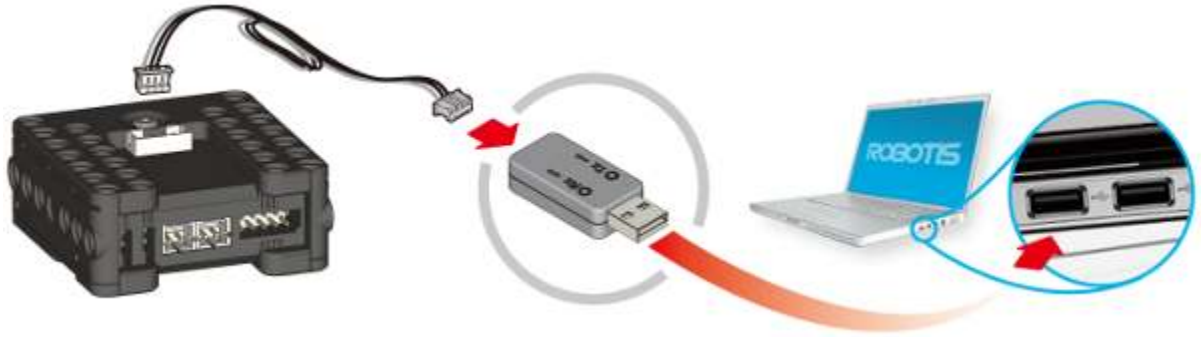
[Available Controller]

- [CM-100](#)

How to Check the Driver Installation

How to check whether the USB downloader(LN-101) driver is installed correctly is as follows.

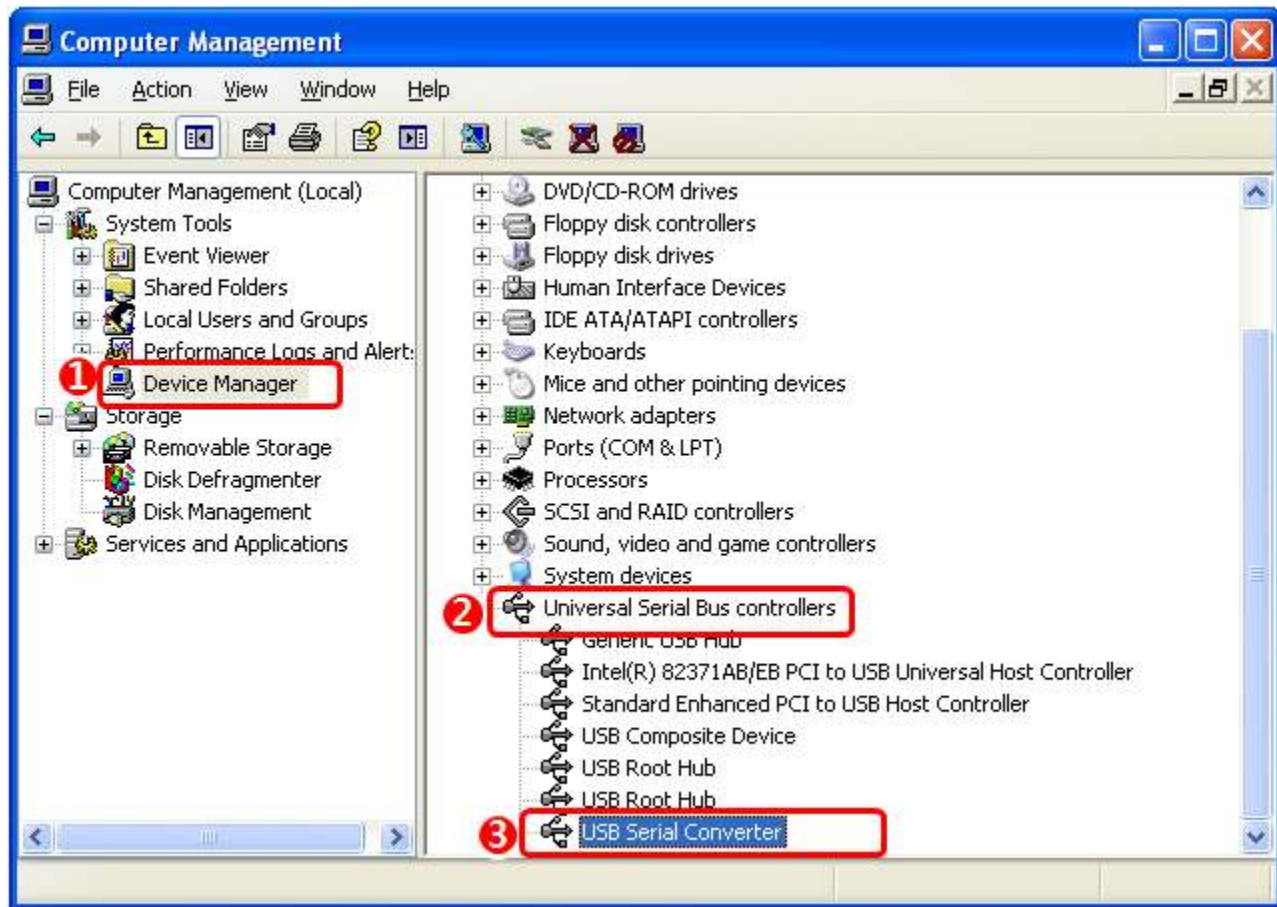
1. **Connect USB Downloader (LN-101) to the USB Port of PC.**



2. Select **Manage** in the **popped-up menu** shown by **right-clicking My Computer**.

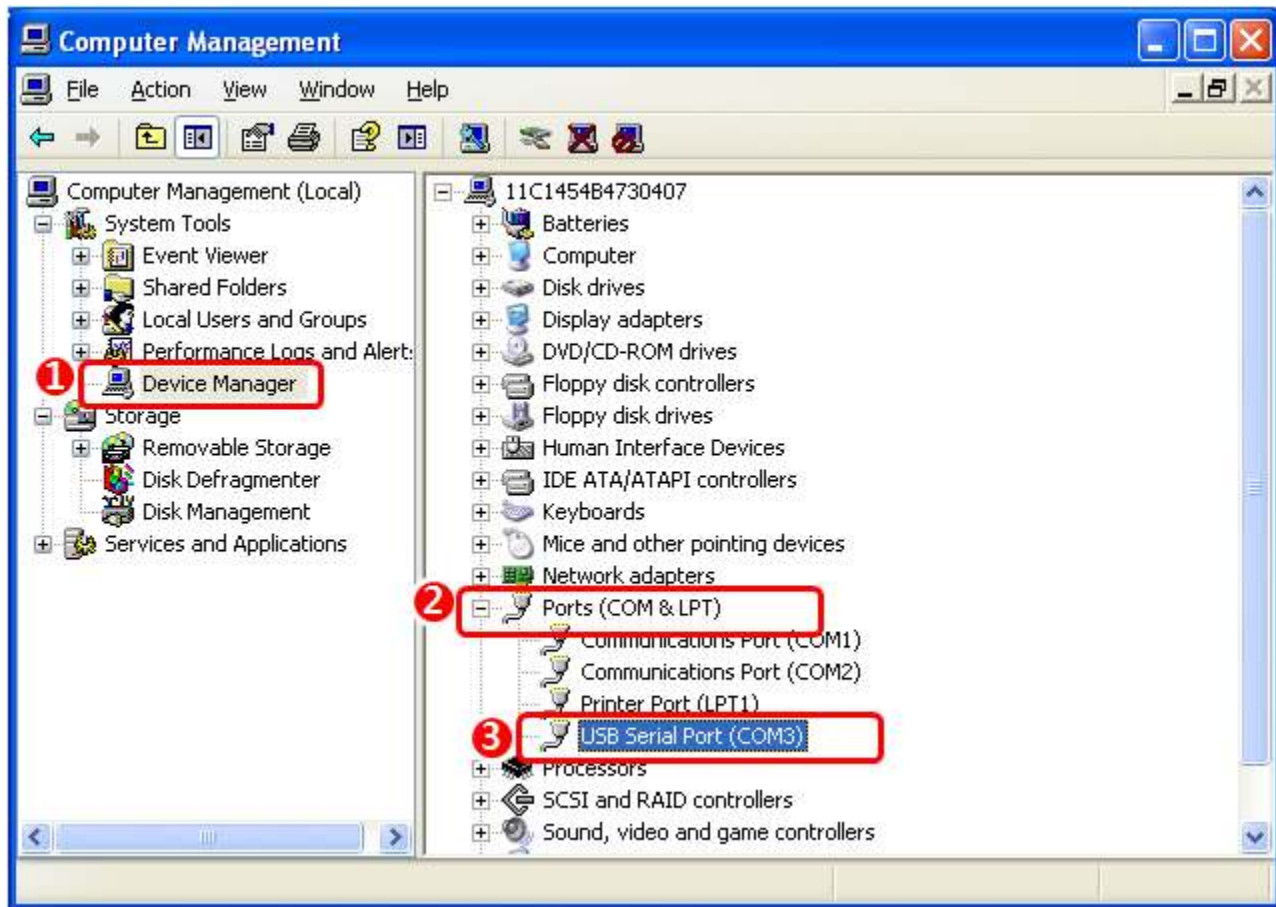


3. Check **USB Serial Converter** in **Universal Serial Bus Controllers** of **Device Manager**.



4. Check **USB Serial Port(COMx)** in the list of **Ports (COM & LPT)**.

(COM Port number may vary depending on each system.)



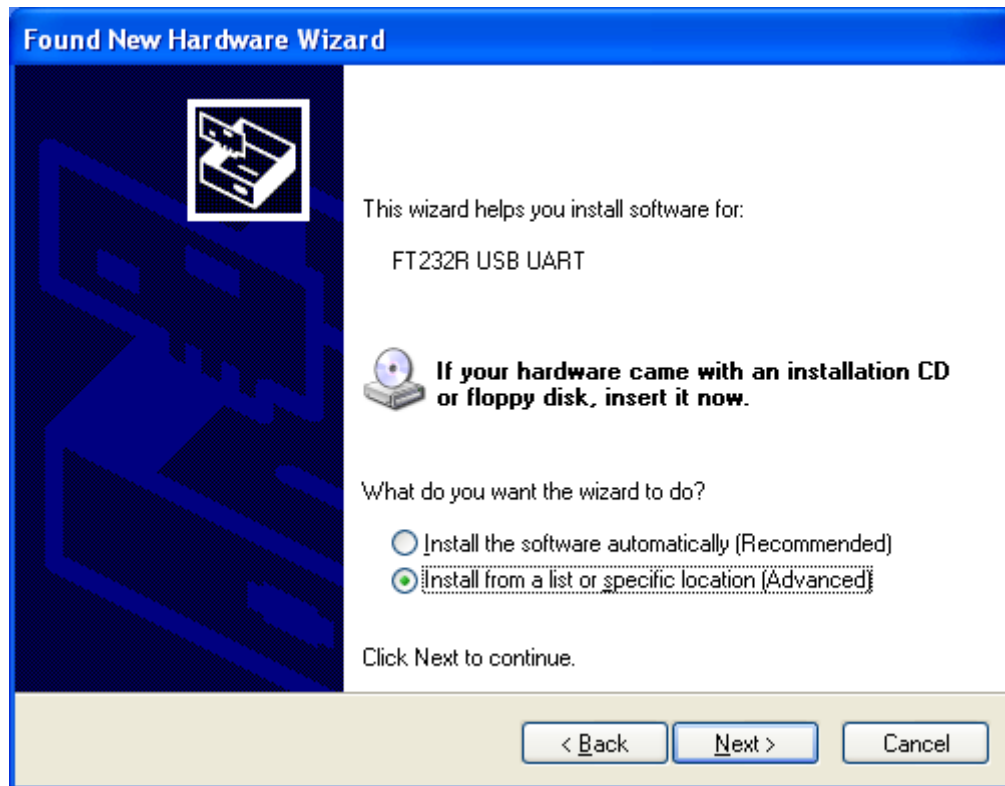
Installing the Driver Manually

If you install the RoboPlus, FTDI Driver (USB2Dynamixel, USB Downloader (LN-101) driver) is installed together automatically.

If you didn't install the RoboPlus yet, or if the driver is not installed appropriately, please install it manually according to following procedures.

1. Connect a device to PC. If the driver is not installed yet, **Found New Hardware Wizard** will be popped up.

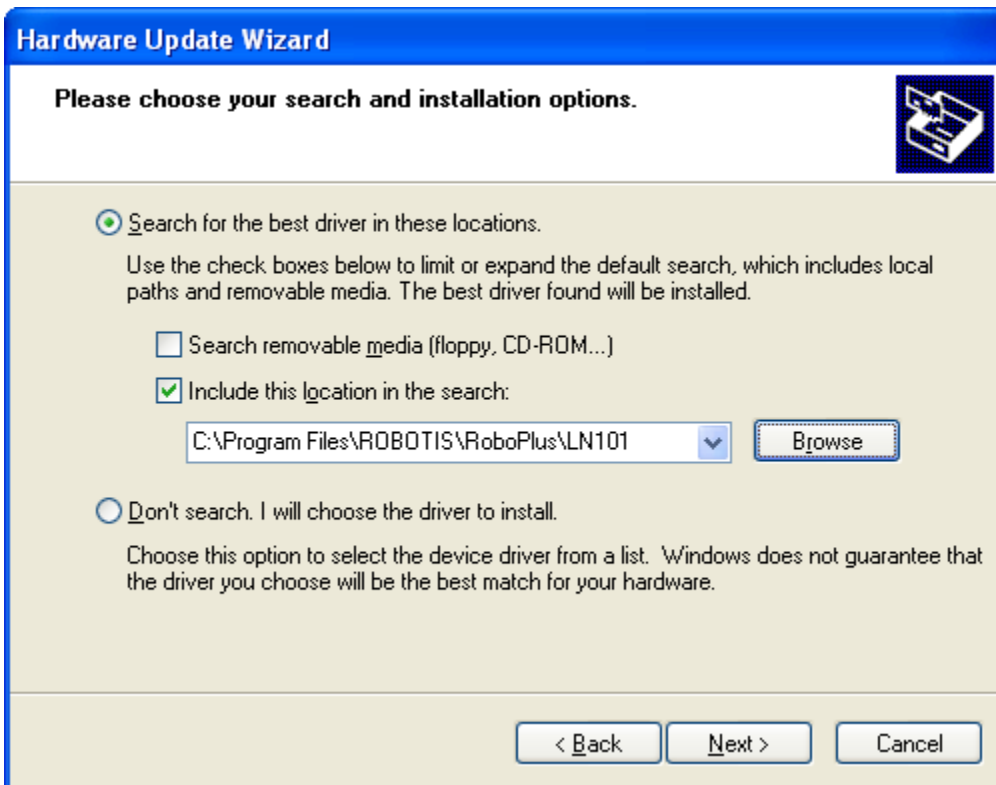
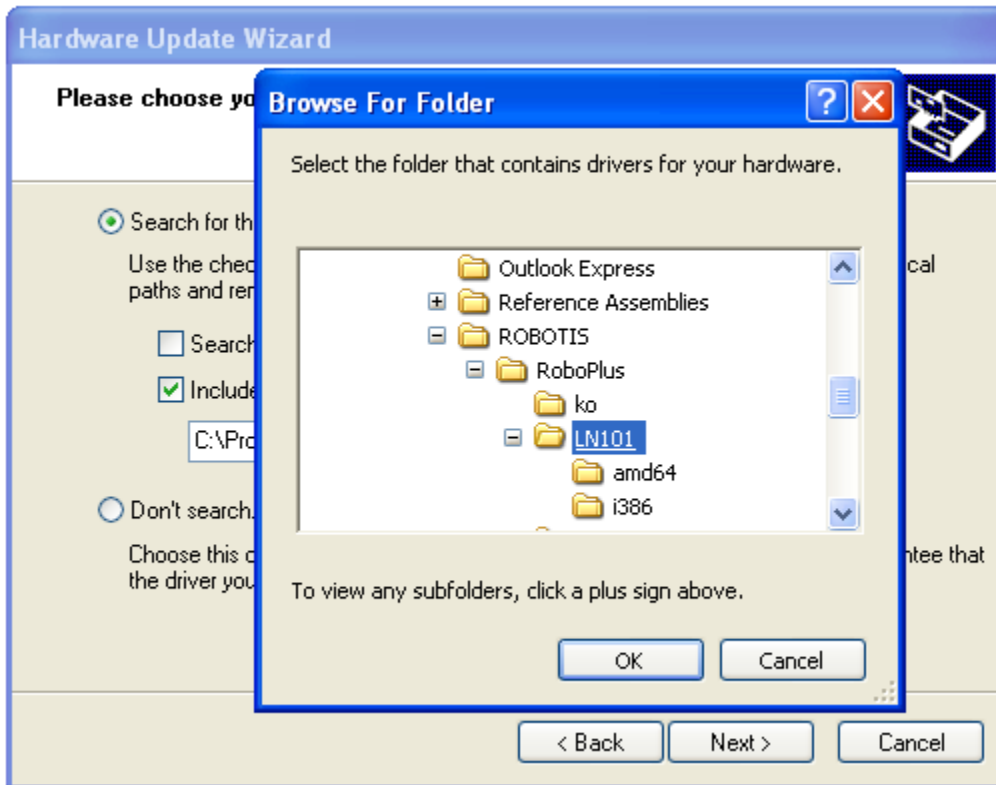
Install from a list or specific location (Advanced)(S) -> Next(N)



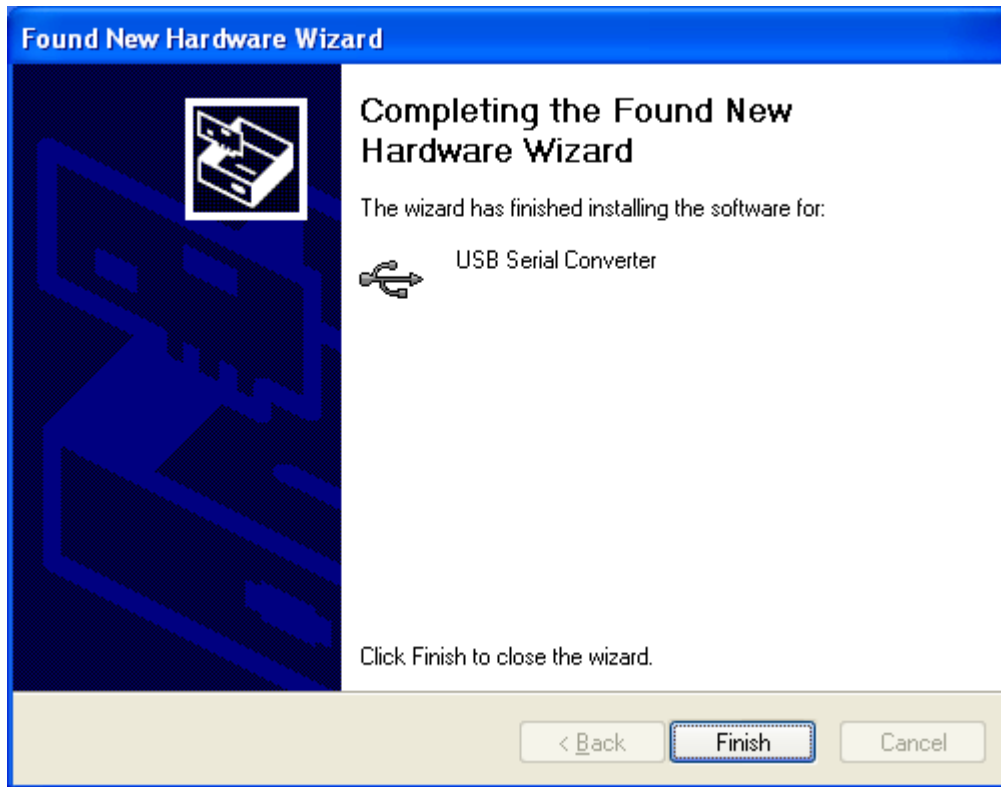
2. **Decide the location of Driver.**

If RoboPlus S/W has been installed automatically, the driver is in LN101 folder of RoboPlus Installation folder.

Or if you want to install the newest version, download the newest version VCP driver from [FTDI Driver Download](#) page.



3. Click the **Next(N)** button to start the installation. Installation of **USB Serial Converter** driver is completed.



4. Install the **USB Serial Port** driver in the same way.

