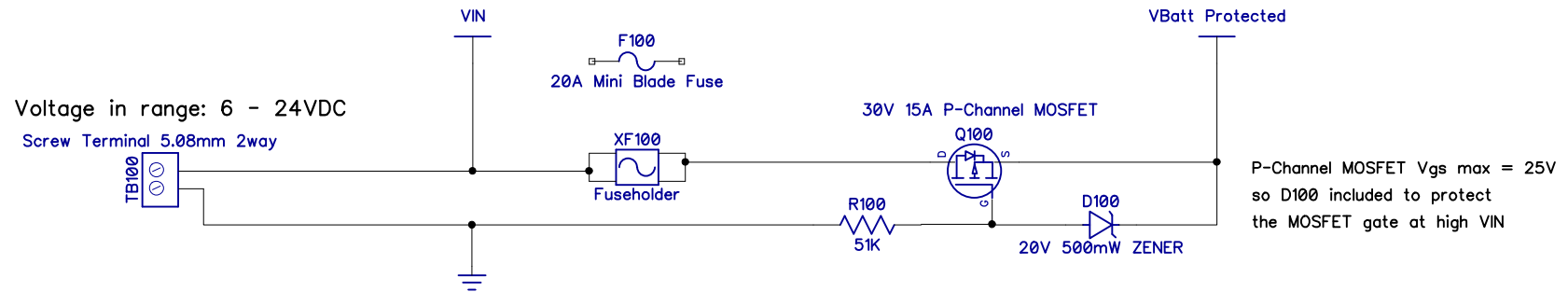
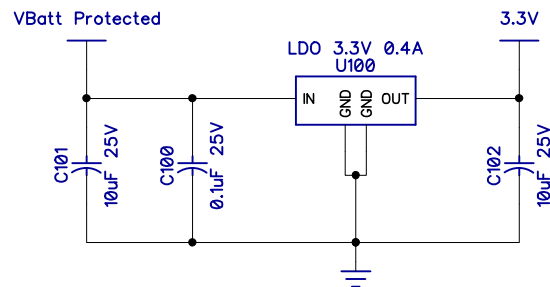


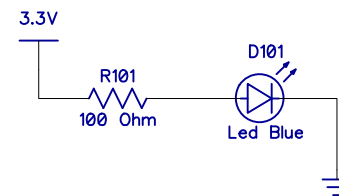
Voltage Input with Over-Current and Reverse Polarity Protection



LDO Regulator for onboard logic



LDO Active LED



Parallax Inc.
599 Menlo Drive
Rocklin, CA 95765
(916) 632-4664
<http://www.parallax.com>

Dual H-Bridge 10A Motor Controller DHB-10

Copyright 2015 Parallax Incorporated. This work is released under the Creative Commons Attribution 3.0 United States License. The full text of the license is available from:
<http://creativecommons.org/licenses/by/3.0/us/legalcode>

Part Number: 28231

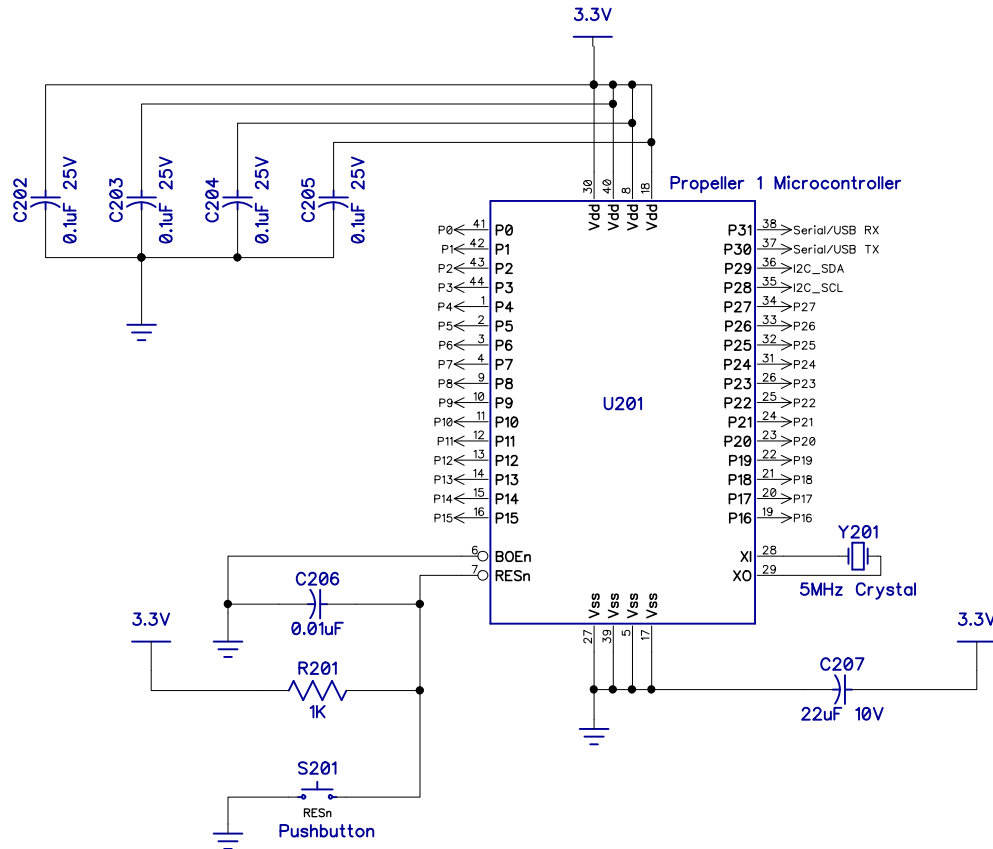
SIZE
A

REV
A

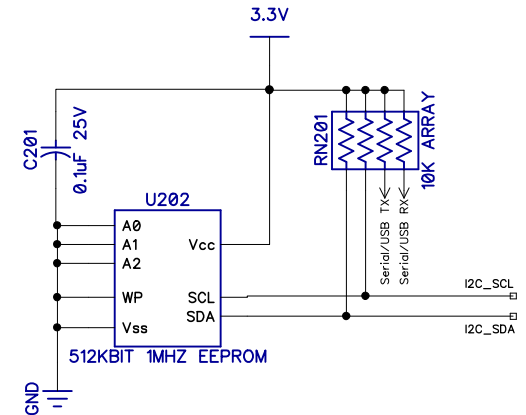
21 Apr 2015

Power

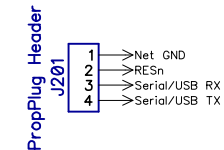
Propeller Microcontroller



Memory for program and data



Propeller Programming Header



Parallax Inc.

599 Menlo Drive
Rocklin, CA 95765
(916) 632-4664
<http://www.parallax.com>

Part Number: 28231

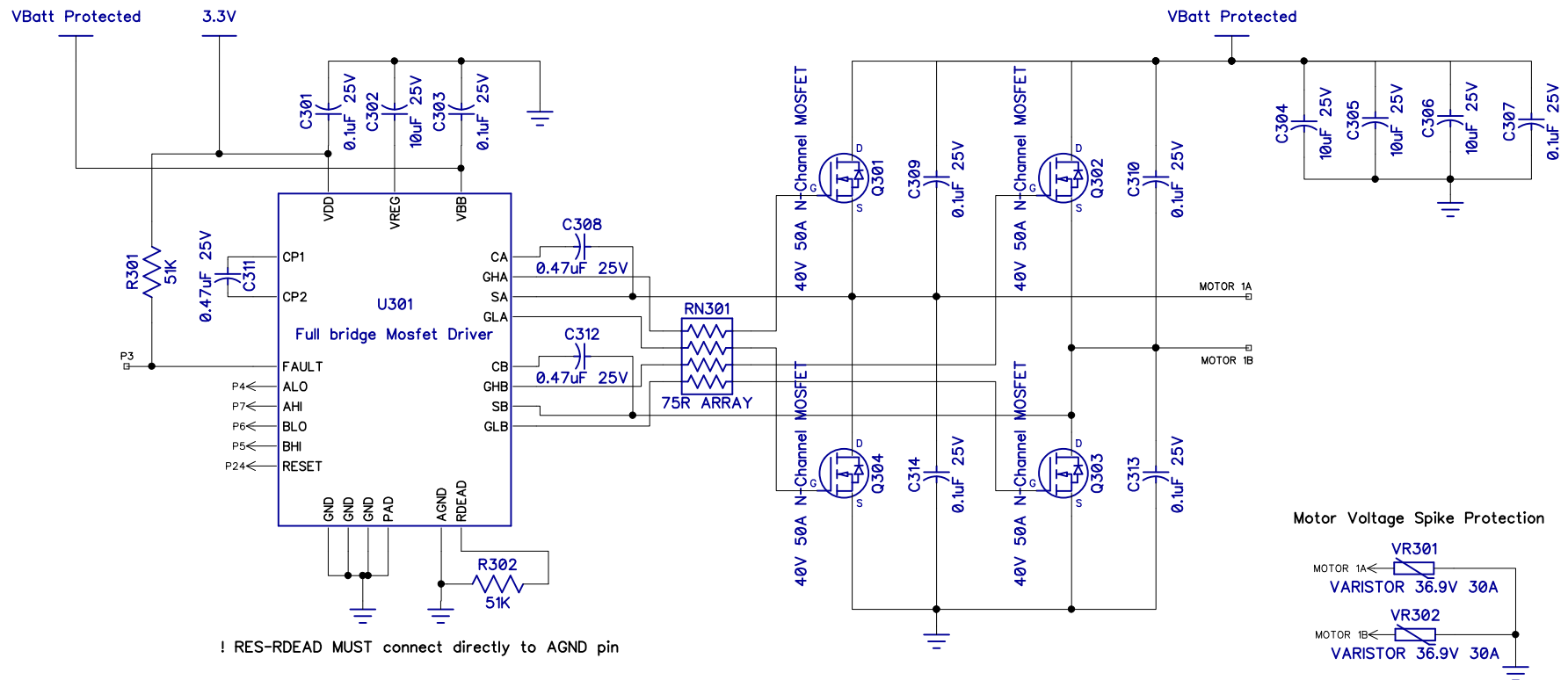
21 Apr 2015

Dual H-Bridge 10A Motor Controller DHB-10

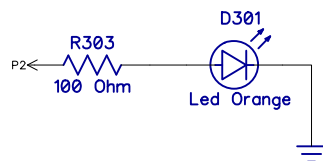
Copyright 2015 Parallax Incorporated. This work is released under the Creative Commons Attribution 3.0 United States License. The full text of the license is available from: <http://creativecommons.org/licenses/by/3.0/us/legalcode>

SIZE A			REV A
		Propeller Microcontroller	

H-Bridge Driver and Power Mosfets for Motor Channel 1



Status / Error



Parallax Inc.

599 Menlo Drive
Rocklin, CA 95765
(916) 632-4664
<http://www.parallax.com>

Part Number: 28231

21 Apr 2015

Dual H-Bridge 10A Motor Controller DHB-10

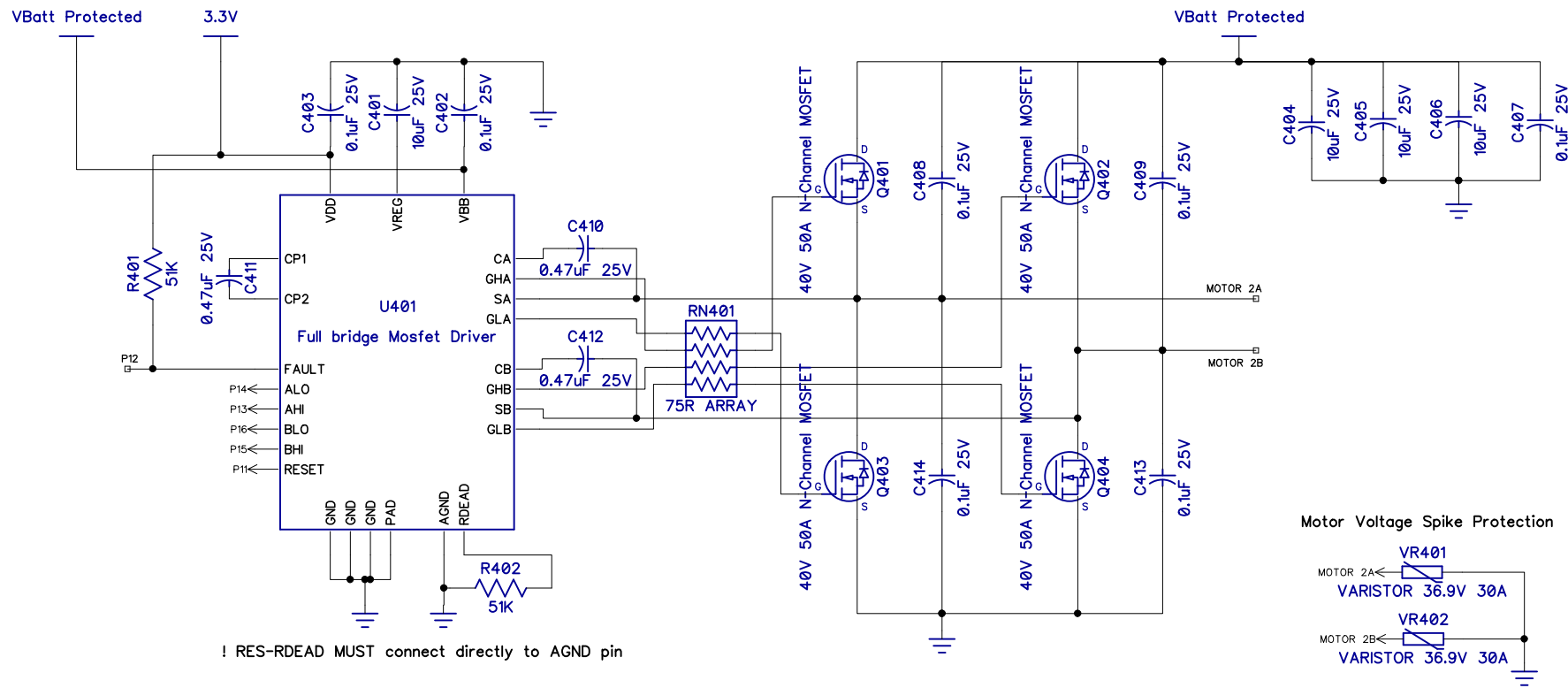
Copyright 2015 Parallax Incorporated. This work is released under the Creative Commons Attribution 3.0 United States License. The full text of the license is available from: <http://creativecommons.org/licenses/by/3.0/us/legalcode>

SIZE
A

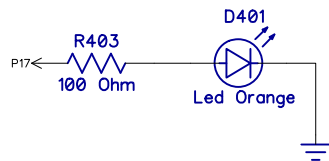
H-Bridge 1

REV
A

H-Bridge Driver and Power Mosfets for Motor Channel 2



Status / Error



Parallax Inc.

599 Menlo Drive
Rocklin, CA 95765
(916) 632-4664
<http://www.parallax.com>

Part Number: 28231

21 Apr 2015

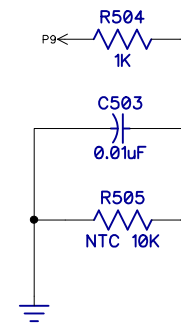
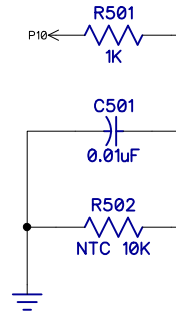
Dual H-Bridge 10A Motor Controller DHB-10

Copyright 2015 Parallax Incorporated. This work is released under the Creative Commons Attribution 3.0 United States License. The full text of the license is available from: <http://creativecommons.org/licenses/by/3.0/us/legalcode>

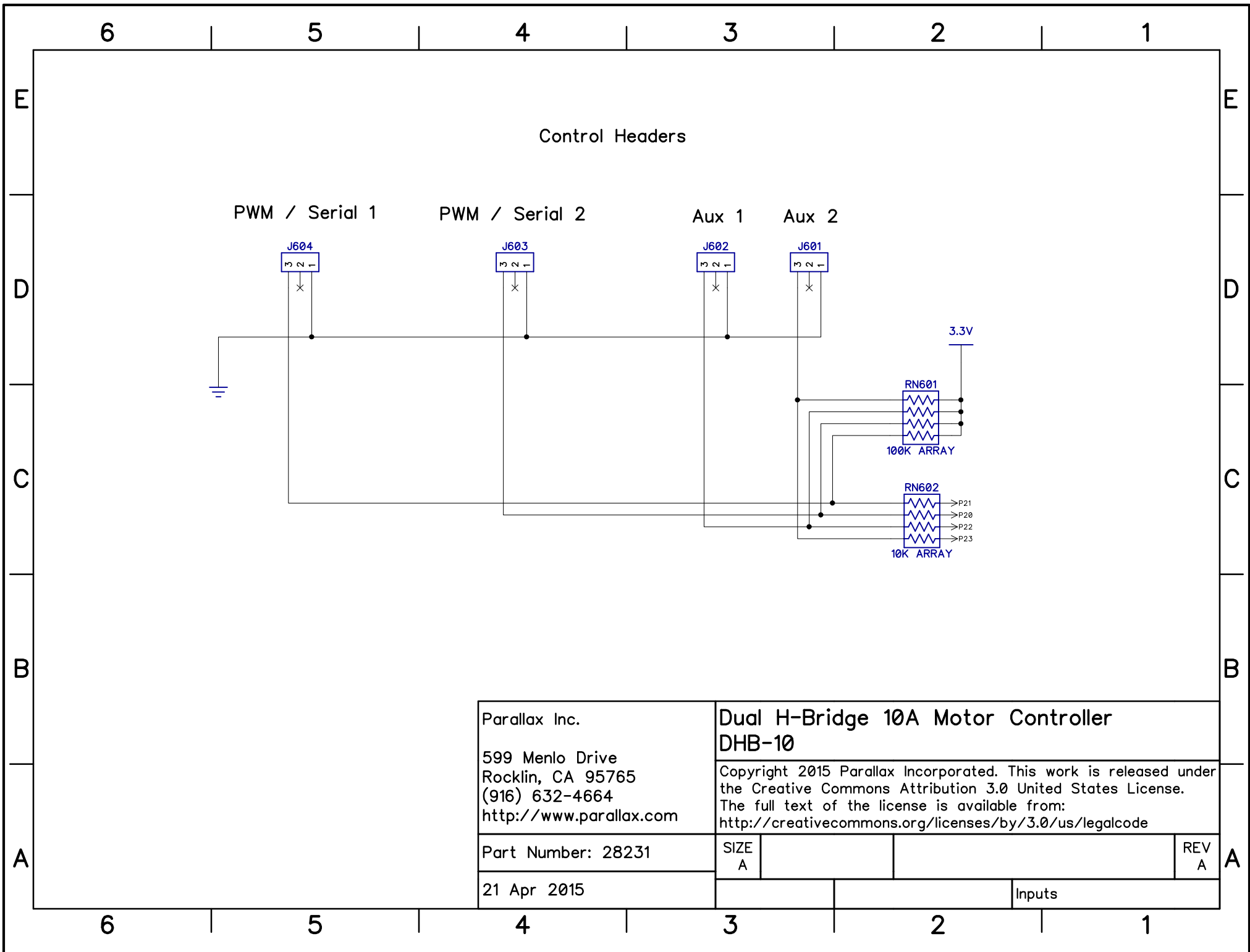
SIZE
A

REV
A

H-Bridge 2

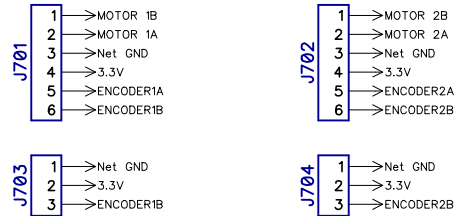


Fan and Temp

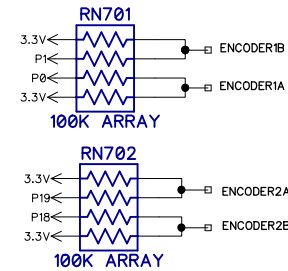


Parallax Inc.		Dual H-Bridge 10A Motor Controller	
599 Menlo Drive		DHB-10	
Rocklin, CA 95765		Copyright 2015 Parallax Incorporated. This work is released under the Creative Commons Attribution 3.0 United States License.	
(916) 632-4664		The full text of the license is available from:	
http://www.parallax.com		http://creativecommons.org/licenses/by/3.0/us/legalcode	
Part Number: 28231	SIZE A		REV A
21 Apr 2015		Inputs	

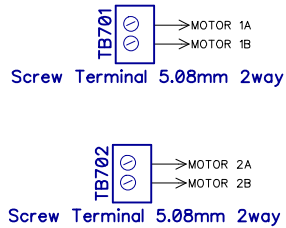
Motor, Bracket and Wheel Kit Headers (with Encoders)
 Layout together, so compatible with #28819 (SIP-6)
 and Quadrature Header (#28962/3)



Protection Resistors



Screw Terminal Headers (Motor up to 10A)



Parallax Inc.		Dual H-Bridge 10A Motor Controller		
599 Menlo Drive		DHB-10		
Rocklin, CA 95765		Copyright 2015 Parallax Incorporated. This work is released under the Creative Commons Attribution 3.0 United States License.		
(916) 632-4664		The full text of the license is available from:		
http://www.parallax.com		http://creativecommons.org/licenses/by/3.0/us/legalcode		
Part Number: 28231	SIZE A			REV A
21 Apr 2015			Motors and Encoders	

6

5

4

3

2

1

E

E

Silk screen labels

LABEL801
PARALLAX INC

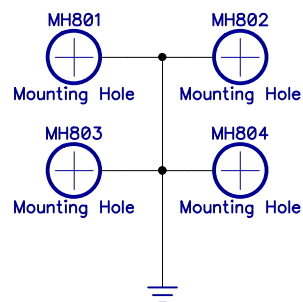
LABEL802
OSHW

LABEL803
CC

D

D

Mounting Holes (3mm fixings)



C

C

B

B

A

A

Parallax Inc.

599 Menlo Drive
Rocklin, CA 95765
(916) 632-4664
<http://www.parallax.com>

Part Number: 28231

21 Apr 2015

Dual H-Bridge 10A Motor Controller DHB-10

Copyright 2015 Parallax Incorporated. This work is released under the Creative Commons Attribution 3.0 United States License. The full text of the license is available from: <http://creativecommons.org/licenses/by/3.0/us/legalcode>

SIZE
A

REV
A

Labels and Holes

6

5

4

3

2

1