

8 7 6 5 4 3 2 1

D

D

C

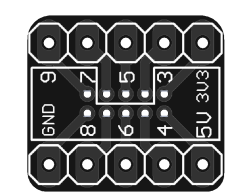
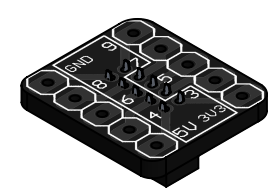
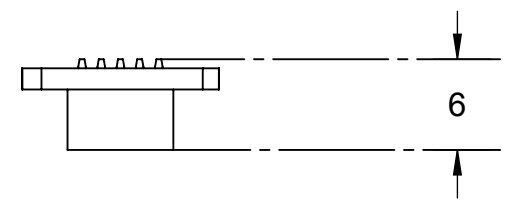
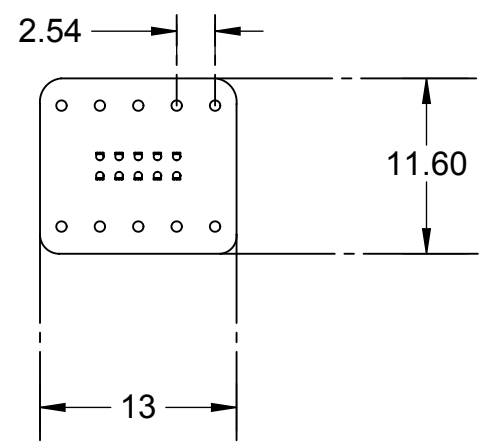
C

B

B

A

A



ENGINEERING NOTES:

SCREW HOLE DIAMETERS ARE 3.2MM, COMPLIANT WITH THE GADETEER STANDARD.
 HOLE SPACING IS BASED ON A 5MM GRID
 ALL DIMENSIONS ARE ± 0.5MM.

G Plug Module

GHI ELECTRONICS LLC

November 7, 2013

www.ghielectronics.com

| SCALE | DIM | REV | SHEET |
|-------|-----|-----|--------|
| 2:1 | MM | 1.0 | 1 of 1 |

8 7 6 5 4 3 2 1