

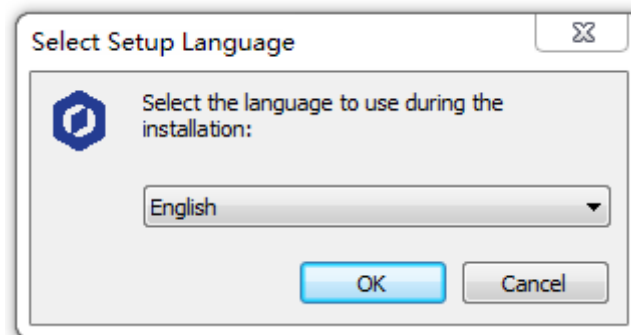


Linear Rail Manual

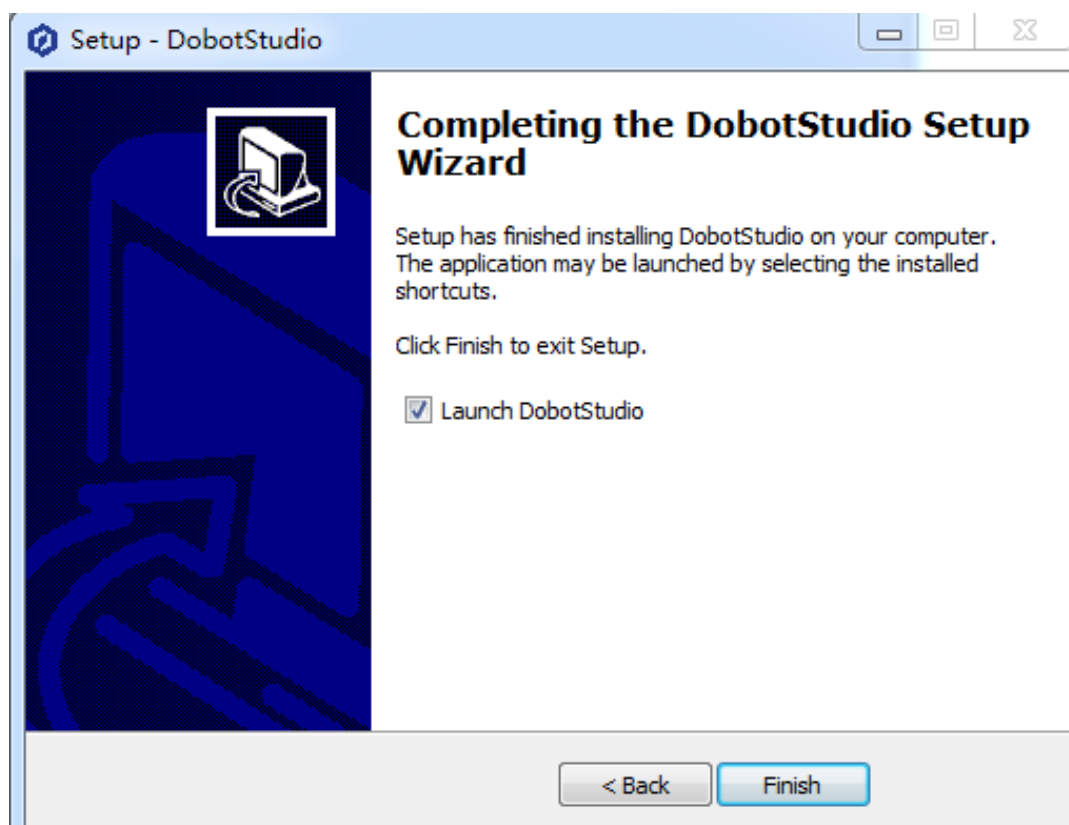
Dobot Magician

V1.0.0 Date: 2017/06/17

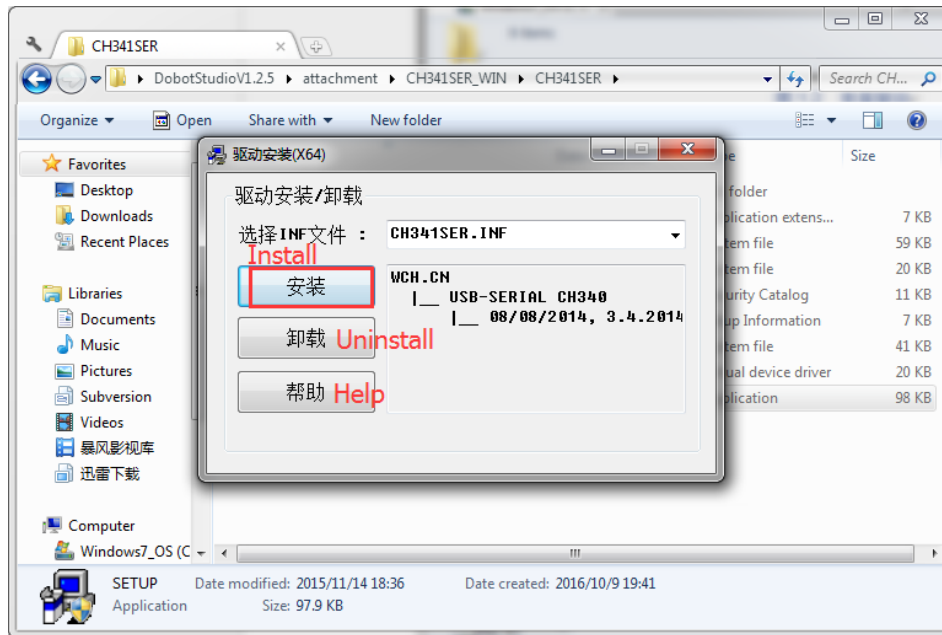
1. Install DobotStudio



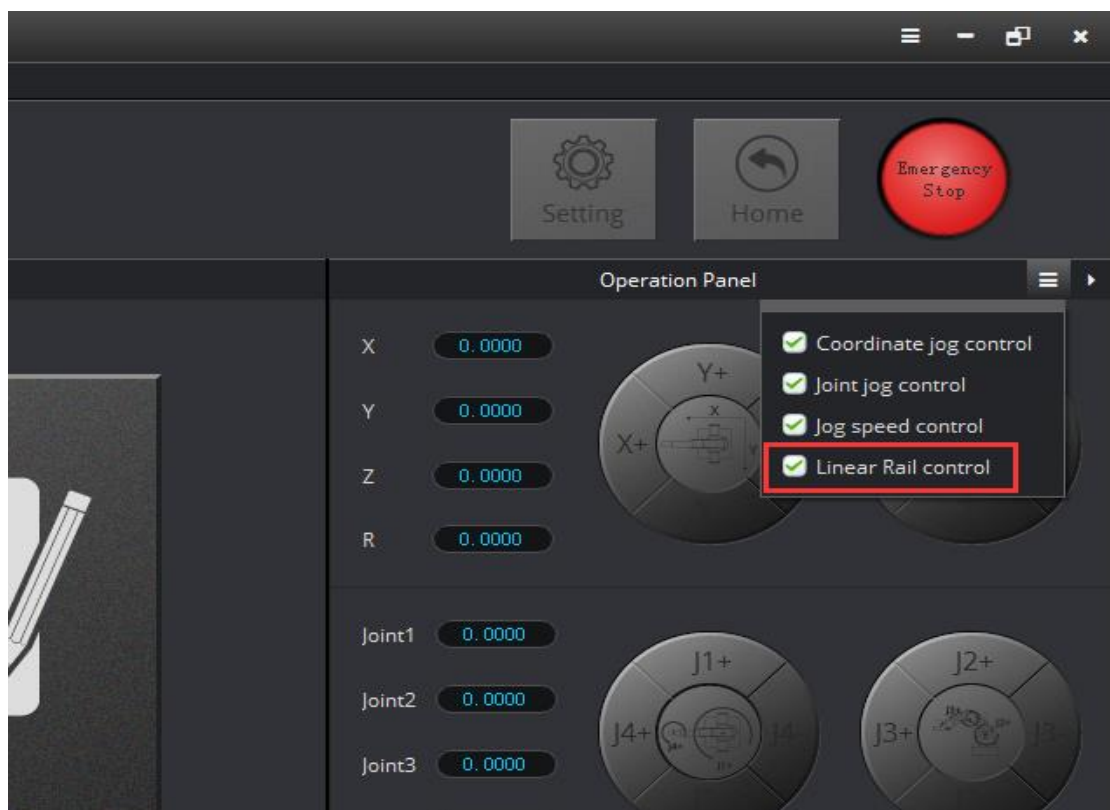
2. Complete Installation



3. Install Driver



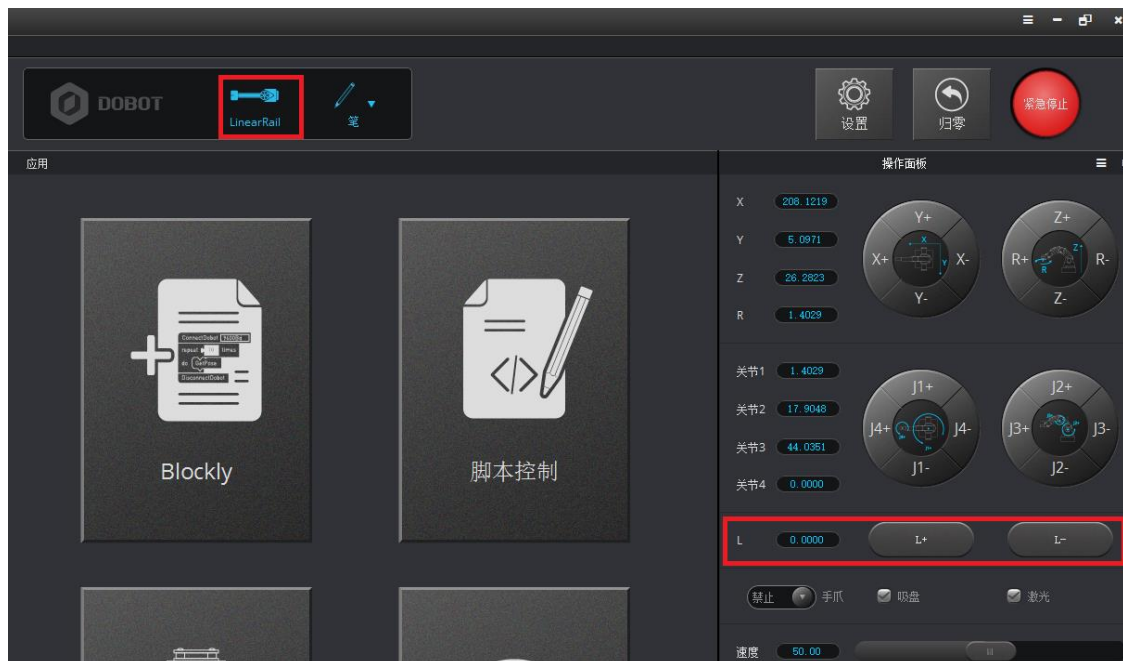
4. Enter the default interface of DobotStudio. Click button next to Operation Panel



5. Click “Linear Rail”, and the icon will pop-up.



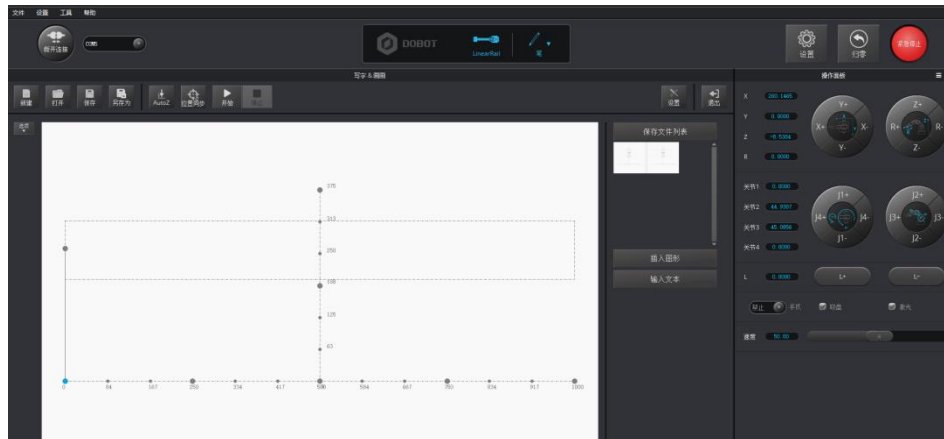
6. Click to open “Linear Rail” function.



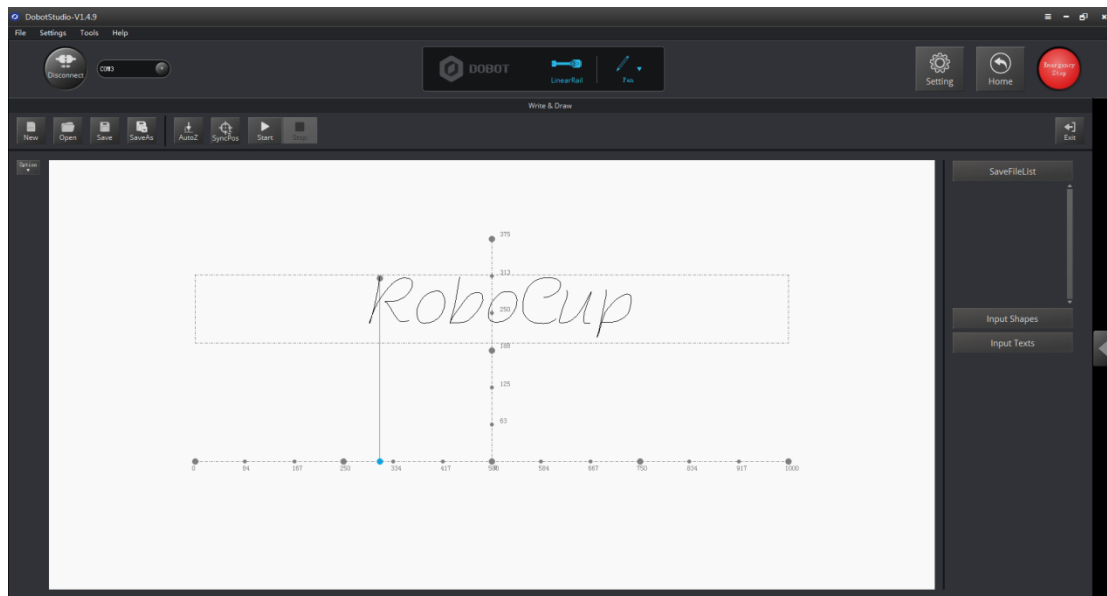
**7. Click "L+", Dobot Magician will move to the left;
Click "L-", it will move to the right.**

8. Add Write&Draw Function to L-axis

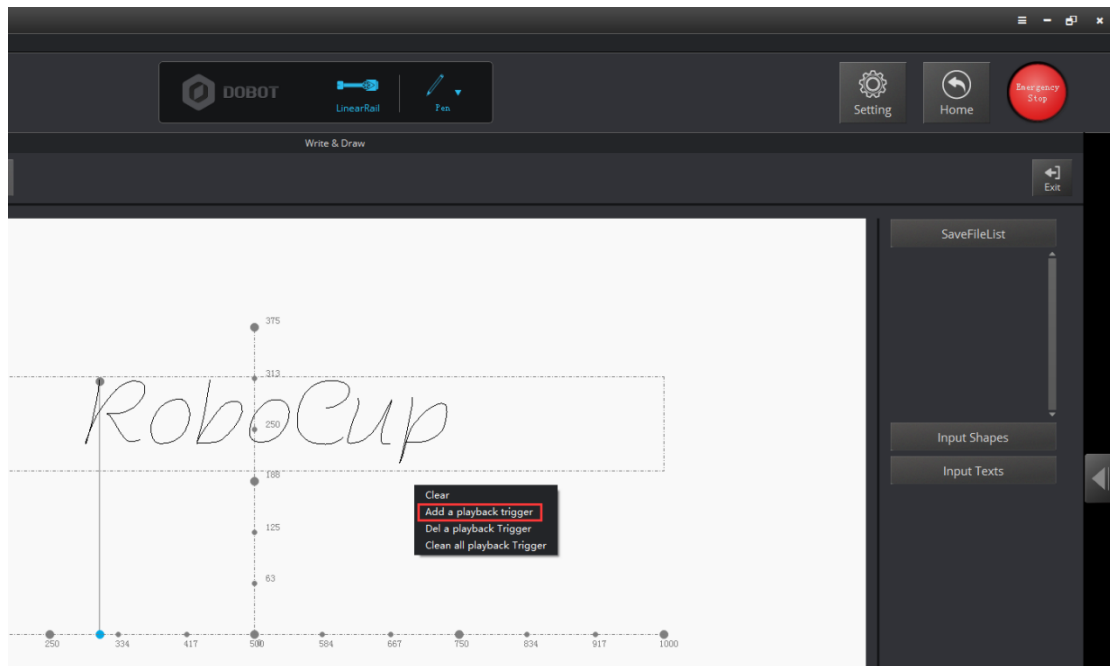
8.1 Click Write&Draw



8.2 Click "Open" firstly and then lead charters into writing area, adjust the height of pen. Secondly click "AutoZ" to save the current data of Z-axis. Click "SyncPos" at last, and Dobot Magician will auto-move to the first stroke and start writing.



8.3 Right-click on the white space, choose "Add a playback trigger" and it will be activated. Some other triggers can be added too.



8.4 Pre-set ink dipping on Teaching&Playback. You can prestore some points and change their location. Dobot Magician will move to the Playback trigger, and the pre-stored motion will be activated during its writing & drawing process.

