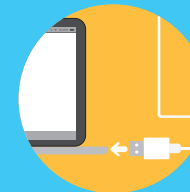


**If mTiny doesn't respond to the map, please upgrade his firmware. The instructions are on the back of the card.**



D1.2.3\_KW010115000

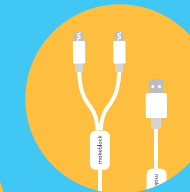
1 Preparation for update.



A computer with USB ports



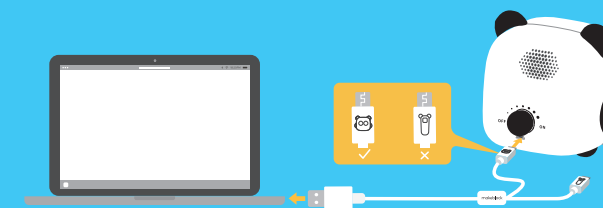
Paired mTiny and tap pen controller  
(with at least 50% battery level)



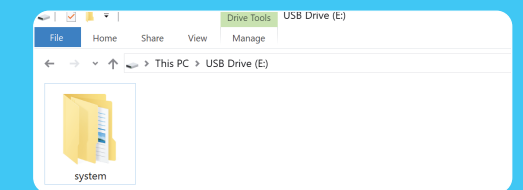
USB cable in the product package

2 Go to <https://www.makeblock.com/support/ps-mtiny#firmware> and download the latest firmware update package.

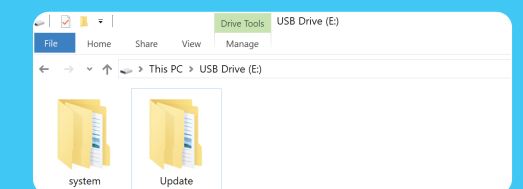
3 Use the USB cable with the mTiny icon to connect mTiny to the computer.



4 After connection, the computer will recognize mTiny as a USB drive. Open it, a folder named "system" will be displayed.



5 Extract the update package. Find the folder named "update" in the extracted directory. Copy and paste the whole "update" folder into the root directory of mTiny's disk.



6 Disconnect mTiny from the computer.

7 Restart mTiny and the tap pen controller, and the update process will start automatically. The update process will take 3 to 5 minutes. Please be patient. There will be a prompt sound when the update is successful.

During the update process, mTiny will automatically check the connection with tap pen controller and the current battery level. The process might stop if those conditions are not met. Please pair again or charge the battery.

Update completed. Try mTiny's new features!